



GREATER HAZELWOOD

WHERE DO YOU...

Community Mapping Dotology Activity

Almono Site

Irvine Street

Hazelwood Ave.

Calvary Cemetery

Hazelwood Greenway

Glen Hazel

Second Avenue

Monongahela River

WHERE DO YOU...

The first public community meeting for the Greater Hazelwood Neighborhood Plan hosted by the Pittsburgh Department of City Planning was held on October 12th, 2017 and led by the design consultant team of Gensler and Urbankind.

One of the focused community engagement activities conducted that evening was a community mapping dotology exercise titled "Where do you...?", an interactive exercise designed to unveil over usage or gaps within civic services and programs, public space, amenities and infrastructure, all while polling local residents on their day-to-day relationship and engagement with their community.

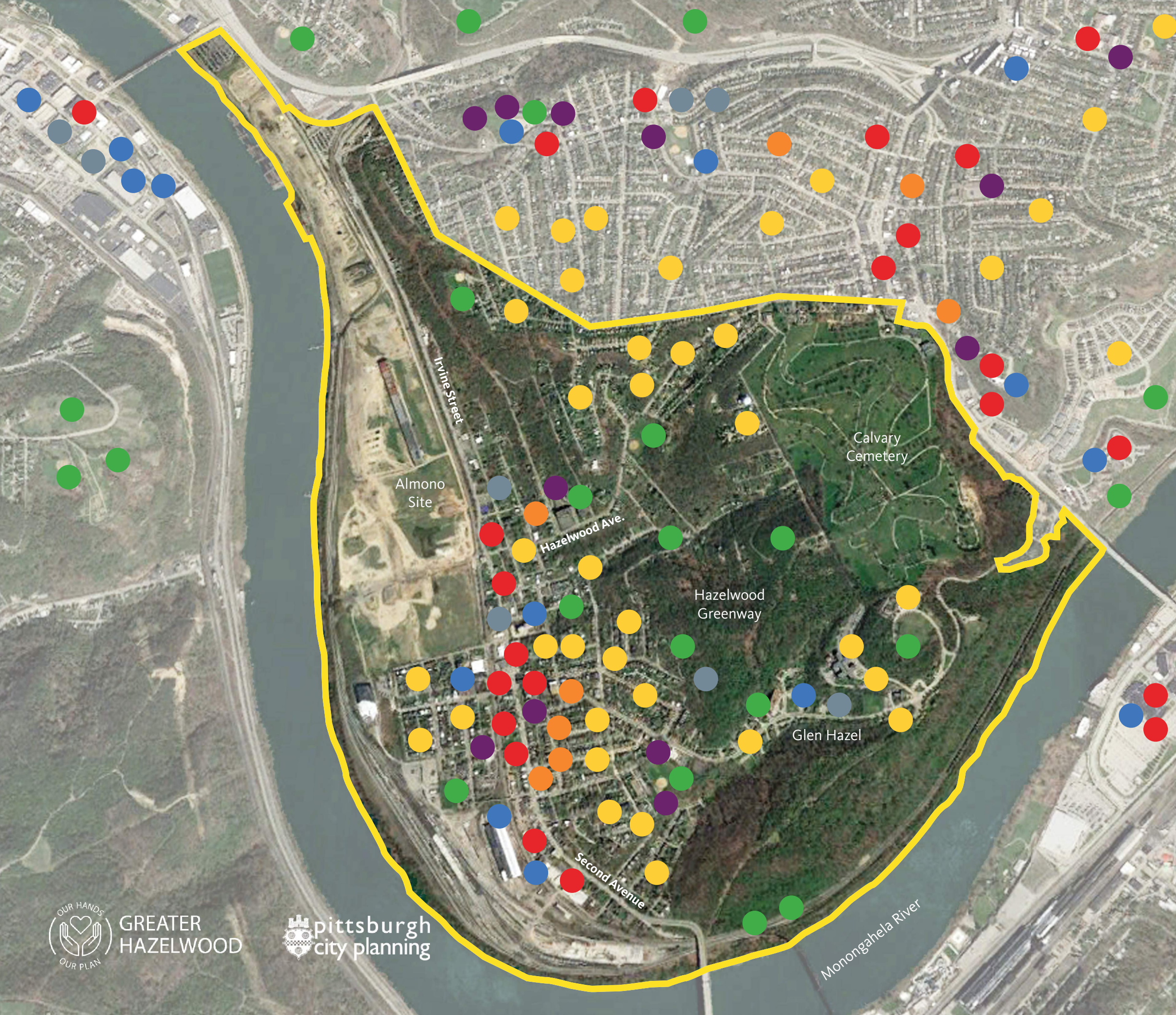
GREATER HAZELWOOD

Each resident received a set of colored dot stickers and a double sided print with an aerial map of the city extended from Hazelwood to downtown Pittsburgh on one side, and an enlarged map focused on the Greater Hazelwood community boundary on the other side.

Community residents were asked a series of polling questions about their engagement with Hazelwood as it related to where they live, work, shop, learn, travel, etc.

WHERE DO YOU...

- LIVE (YELLOW)
- WORK (BLUE)
- SHOP (RED)
- PRAY (ORANGE)
- HEAL (SILVER)
- PLAY (GREEN)
- LEARN (PURPLE)



GREATER HAZELWOOD

Residents focused on the Greater Hazelwood aerial map first, placing colored dots on the map to indicate the locations for each question. If a location extended beyond the boundaries of the Greater Hazelwood Map, then residents placed dots on the larger city map on the opposite side. If a location extended beyond the boundaries of the Pittsburgh city map, then residents placed a dot on the north, south, east, or west arrows along the perimeter of the city map.

WHERE DO YOU...

- LIVE (YELLOW)
- WORK (BLUE)
- SHOP (RED)
- PRAY (ORANGE)
- HEAL (SILVER)
- PLAY (GREEN)
- LEARN (PURPLE)



DOWNTOWN
PITTSBURGH

GREATER
HAZELWOOD



SUMMARY

- A solid majority of the community residents polled at the first Community Meeting live within the Greater Hazelwood extended boundaries. Solid representation from Glen Hazel community residents.
- Aside from residents who work out of their home, **more than 70% of the community residents polled work outside the Greater Hazelwood extended boundaries.** There was a large number of retired residents in attendance at the first Community Meeting who were directed to leave this question blank.
- With the limited concentrated retail along 2nd Avenue, the majority of residents polled are **forced to travel well beyond the Greater Hazelwood extended boundaries to gain access to viable retail.** There were higher concentrations of utilized retail shopping near the Central Business District (*downtown*) and across the river in Homestead.
- There is a **strong concentration of accessible and highly utilized churches** and religious institutions for worship that fall within the immediate Greater Hazelwood boundary.
- **Very limited access to Healthcare facilities within Greater Hazelwood.** The majority of residents polled receive healthcare treatment outside of the Greater Hazelwood extended boundary, primarily utilizing medical institutions at the University of Pittsburgh or Carnegie Mellon University (*approximately a 12-20 min drive away*)
- **Nearly 60% of the community residents polled rely on Personal Cars for transportation.** Followed by 29% utilizing Public Transportation (Bus), and approximately 12% who prefer to walk. Both Bicycles and Cab/Rideshare companies like Uber and Lyft accounted for 4% each of preferred travel options.